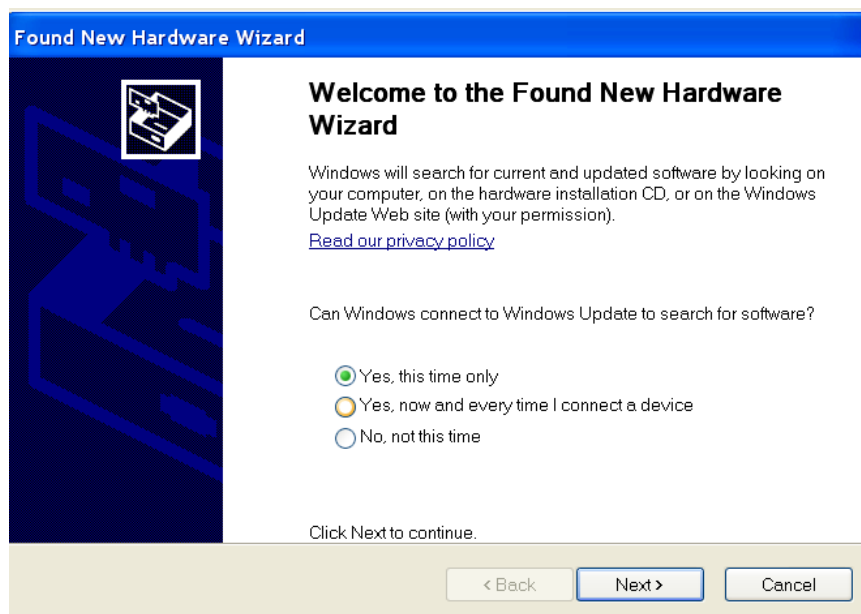


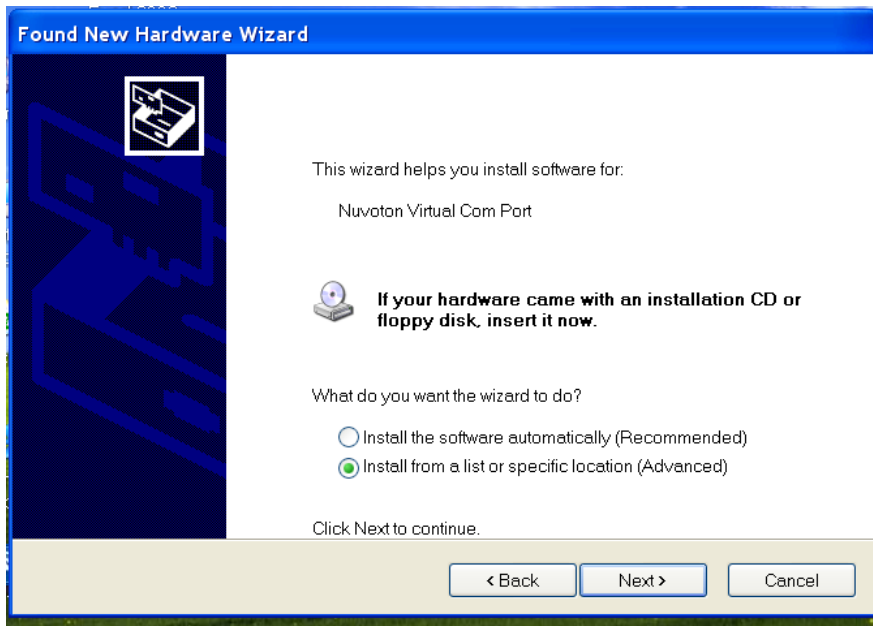
## Installation of USB Driver:

1. Connect USB cable to KA series power supplies USB interface and computer USB interface; switch on and in a few seconds dialogue box “Found new hardware wizard” will come out from Windows system (see figure 1 below). If this still doesn't come out, please check whether USB cable is connected correctly or not, whether programmable power supply works well or not. If connection and working are both good, please restart PC and power supply to check if the malfunction can be removed.



**Figure 1:** When connecting power supply and PC with USB cable, dialogue box “Found new hardware wizard” will come out.

2. In the interface of figure 1, please select the first one "Yes, this time only", and then click next> to enter figure 2 (see below); at this time, select the second choice and then enter the interface of figure 3.



**Figure 2**

3. In figure 3, please select "Search for the best driver in these locations" and "include this location in the search", and then choose the route of USB driver file. If USB driver is installed through the provided CD, please select as what figure 3 shows:

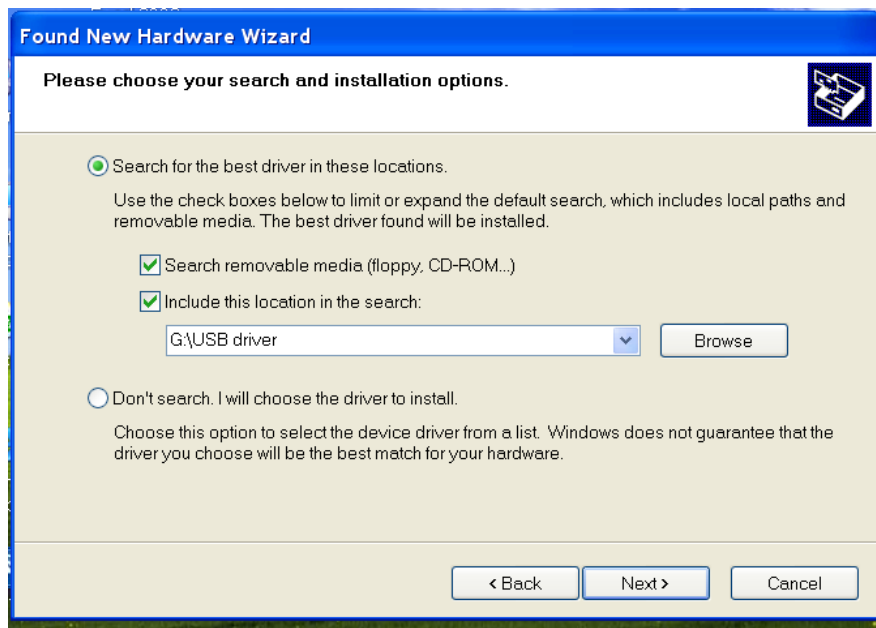


Figure 3

4. Something like Microsoft driver verification may come out from the system; if so, please click "Continue Anyway"(see figure 4), and after that, the system will start to install USB driver (see figure 5).

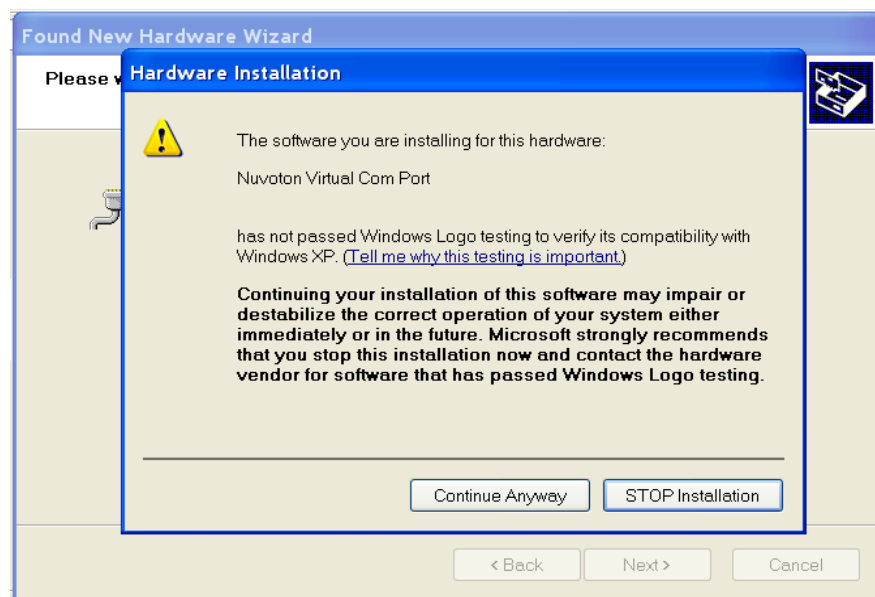
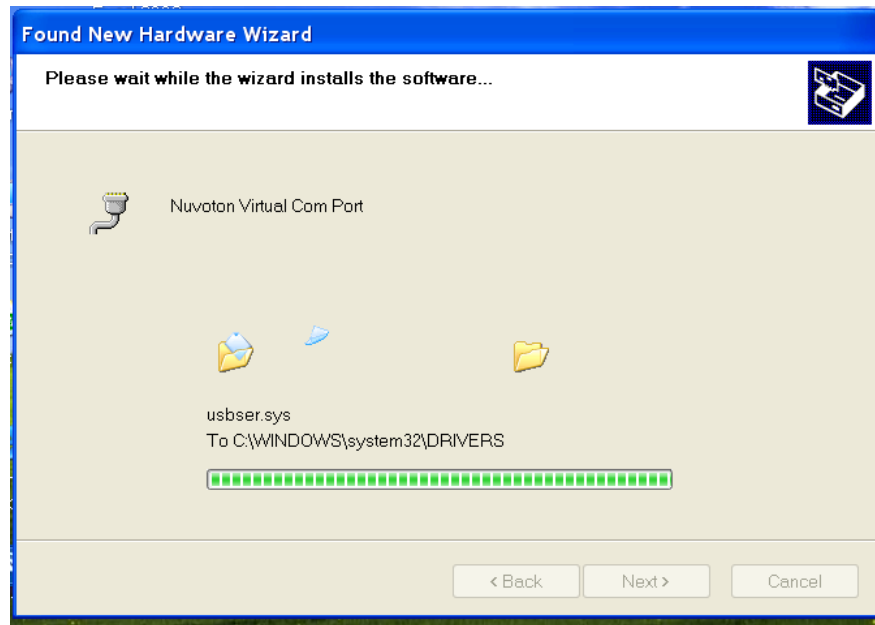
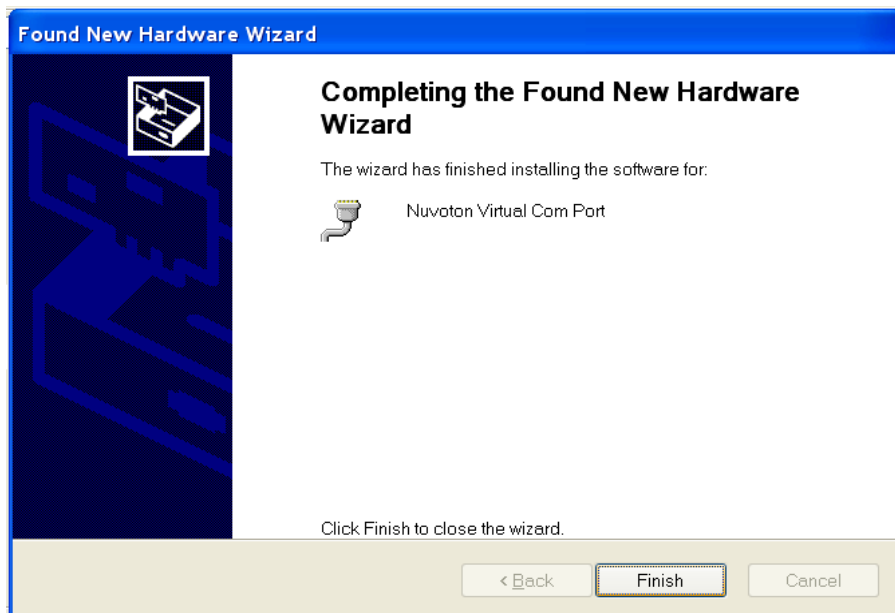


Figure 4




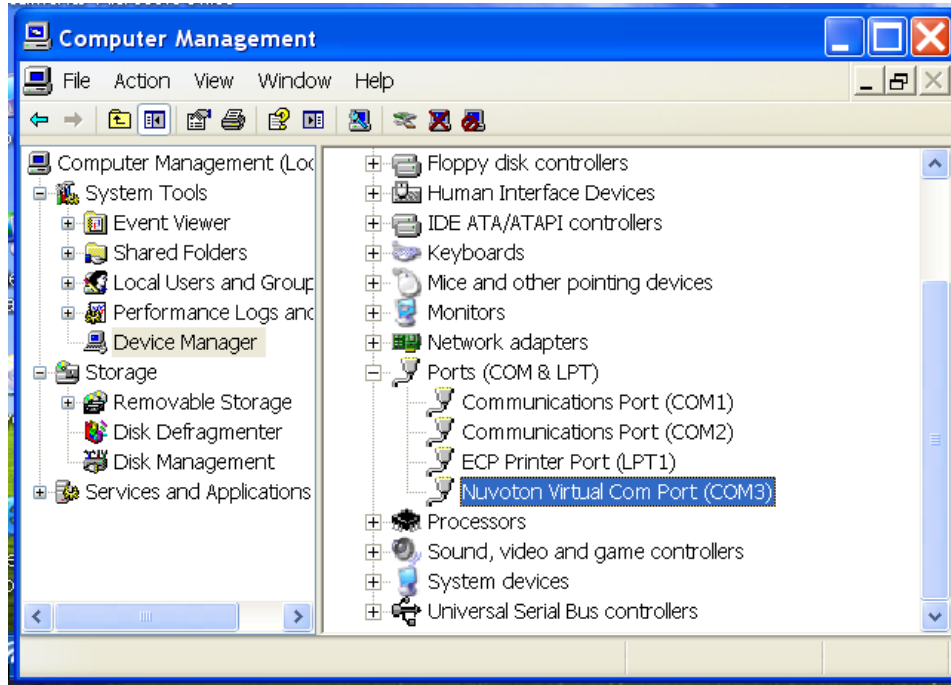
**Figure 5.** USB driver is being installed

5. When USB driver is installed well, the completing interface from the system as below will come out (see figure 6).




**Figure 6**

6. After USB driver is installed successfully, there will be  **Nuvoton Virtual Com Port (COM3)** coming out in the menu ports (COM&LPT) of Computer Management of My Computer, which means the installation is completed (see figure 7).



**Figure 7** The hardware driver icon you will see in the interface of PC Computer Management after USB driver is installed well.

**Note:** in the icon  **Nuvoton Virtual Com Port (COM3)**, please note (COMX); if the value of X is more than 8, please change into  $\leq 8$ .