

公司总部

地址：山东省泰安市岱岳经济开发区卧虎山南街
泰安高铁站西侧
销售热线：0538-6138575

Company

Address: Wohushan South Road, Daiyue District,
Tai'an City, Shandong Province
Tel: 0538-6138575

深圳体验&展销店

地址：广东省深圳市福田区华强北路
赛格电子市场1C062
联系电话：13302965001 0755-83461917
QQ: 2108486897

Shenzhen Experience & StoreShow Room

Address: 1C062, SEG Electronics Market,
Huaqiangbei Road, Futian District,
Shenzhen City, Guangdong Province
Tel: 13302965001 0755-83461917

puhui[®]
普惠科技

SMT一站式生产设备制造商
SMT professional manufacturer



puhui[®]
普惠科技

泰安普惠电气科技有限公司
Tai'an Puhui Electric Technology CO., LTD.

SMT一站式生产设备制造商
SMT professional manufacturer

✉ eletools@msn.com tech168cn@hotmail.com

☎ +86-538-6138575

🌐 www.tech168.cn

泰安普惠电气科技有限公司

Tai'an Puhui Electric Technology CO., LTD.

专业生产制造
回流焊机、贴片机、
红外拆焊台、锡膏印刷台
等线路板焊接检测设备

Our company is a manufacturer specialized in R&D and producing
Reflow Oven & SMT Chip Moulder & BGA infrared Rework Station
& Solder Paste Printer etc. PCB soldering machines.

The 公司简介 Company

泰安普惠电气科技有限公司,成立于2007年,总部位于山东省泰安市,是国家信息部和国家工业部首批认定的回流焊生产企业,也是国内最早从事SMT生产设备的专业制造商。

Tai'an Puhui Electric Technology CO., LTD. is founded in the 2007, locating in TAIAN city. It is the first identified reflow oven company by National information department and Ministry of Industry. It is also one of the first of SMT production manufacturer.

公司专注于小型SMT生产设备的研究,以红外线智能回流焊机、红外拆焊台和印刷机为核心产品。普惠科技五大系列,25类产品拥有多项自主知识产权,16余项产品专利,所有产品均取得CE证书。

Puhui focuses on research and develop SMT productions for over the years. The main equipments, such as reflow oven, auto chip mounter, infrared rework station and solder paste printer, are at the top of SMT industry in china. There are 5 series, more than 25 models and 16 patents. All machines have CE Certificate.

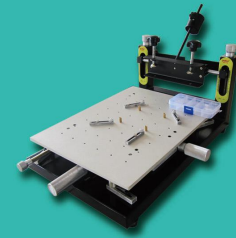
在研发和生产的十余年中,普惠科技的品牌力量已深入广大客户内心,公司产品的质量得到了业界内的高度好评。公司本着以科技求生存,以质量、信誉创品牌的宗旨,以完善的服务竭诚欢迎海内外客商洽谈合作。

We pay great attention to the product quality, the pre-sale and the post-sale service extremely. As we all know, the technology is the most important thing that makes the company alive. With the purpose of making this brand famous by the quality and the prestige. We will do our after-sale service heart and soul, we do welcome merchants, all around the world, come, discuss and cooperate.



泰安市电子贴装焊接设备工程技术研究中心

依托单位: 泰安普惠电气科技有限公司
泰安市科学技术局
二〇一二年十二月二十六日



puhui
普惠科技

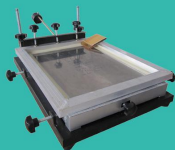


为您提供产品整体服务

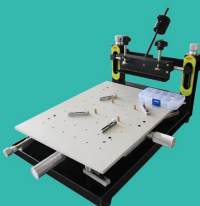
专业搭配，省钱，更省心

SMT一站式设备 SMT Production Line

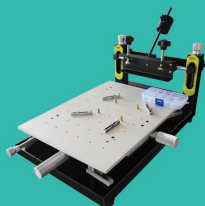
个体/实验
加工必备



科研/生产
加工必备



企业生产
加工线



LED
加工线



Satisfy different requirement in manufacturing

SMT- Chip Mounter Machine

线路板表面贴装- 贴片机

技术参数

Technical Parameter

速度 Speed	3600-5500CPH
贴装角度 Rotation	0-360°
定位精度 Positioning Accuracy	0.025mm
供料位数 Feeders Capacity	56
适用元件 Component Range	0603-1206, 贴片三极管、二极管、 电容、电阻、芯片等 0603-1206, SMD Triode, Diode, Chip capacitor, chip resistor, SOP chip
供料类型 Tape feeders Type	8mm=50, 12mm=4, 16mm=2
脱机存储文件数量 Offline storage for P&P files	20
电源 Power Supply	220V, 50Hz

特点

Characteristics

多轴立体四维运动，降低运动路径，延长机器使用寿命
多料栈设计，56位料栈满足不同元件、芯片的贴装需求
高效的贴装系统控制，更快的速度，更高的精度
独立研发的贴装软件，更好的稳定性
超大尺寸贴装面积，满足不同线路板贴装需求

Multi-axis mechanical structure reduces movement of any mechanism for prolonging the using life of the machine.
Multi-Feeders designed with 56feeders meets different requirements of picking different components and chips.
High efficient P&P control system, more faster and more precise.
Independently developed P&P software brings more stability.
Super picking size meets picking different PCB.

系列产品

Series of products

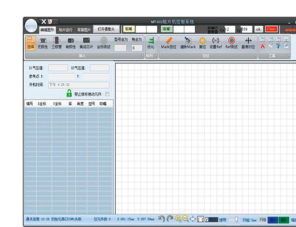
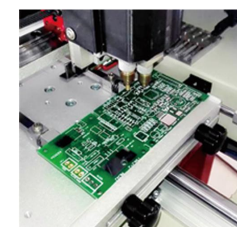
型号 Model	MT-60	MT-602	MT-602L
贴装头数量 Number of Heads	1	2	2
贴装速度 Placement Rate	3600CPH	5000CPH	5500CPH
电路板贴装尺寸 Board Dimension	300mm×400mm	300mm×400mm	1240x300mm
包装尺寸 Packing Size	145*87*60cm	147*90*72cm	147*90*72cm
重量 Weight	180kgs	190kgs	190kgs



单头自动贴片机
Auto Chip Mounter MT-60



1.2mLED 贴片机
1.2m LED SMT Machine MT-602L



SMT-
Channel Reflow Oven

线路板表面贴装-
通道式回流焊机

技术参数
Technical Parameter

加热方式 Heating type	红外加强制热风 Infrared&hot air
冷却区数量 Cooling zone	1
运输方向 Conveyor direction	左→右 left-right
传送方式 Conveyor type	网传动+链传动 Net+Chain transmission
运输带速度 Conveyor speed	0-600mm/min
温度控制方式 Temperature control	PID&SSR
温度控制精度 Temperature control accuracy	±1℃
PCB温度分布偏差 Temperature distribution deviation	±2℃

系列产品
Series of products

型号 Model	T-980
加热区数量 Heating zones	上5下3 Upper5/Down3
加热区长度 Heating zone length	1160mm
PCB最大宽度 Max width of PCB	400mm
升温时间 Heat-up time	20分钟 20mins
温度控制范围 Range of temp control	室温~350℃ RT~350℃
电源 Power	380V/220V
额定功率 Peak power	13.2KW
平均功率 Work power	7.0KW
外型尺寸(长*宽*高) Overall dimensions(L*W*H)	1600*734*567mm
机器重量 Weight	130kgs

特点
Characteristics

采用红外与热风混合加热技术，配备专用设计风轮风速稳定，温度均匀
独立PID控制，上下独立加热方式，温度均匀、准确、升温快
前置式控制操作面板，避免控制柜内温度过高，提高机器稳定性
智能曲线加热方式，配备8条工艺曲线完全满足各类焊接工艺要求
可编程控制技术，预存曲线记忆存储功能，自动完成整个焊接过程
采用精密热电偶测温，补偿电路设计，使测温更准确，曲线更完美

Infrared and hot air heating technology, equipped with special designed wind wheel.
PID controlling and Up-Down heating type.
Front-load operation panel avoids highly temperature in the panel to improve stability.
Intelligent temperature wave heating type, oversized capacity wave selection, have 8waves can satisfy various soldering technological requirements.
Use programmable technology, preset the temperature wave memory storage function, the whole welding process automatically.
Adopt the thermocouple temperature measurement and add the compensation circuit, make the temperature measurement more accurate, the wave more perfect.



通道式回流焊机
Channel Reflow Oven

T-980

SMT-Channel Reflow Oven

线路板表面贴装-通道式回流焊机

技术参数

Technical Parameter

加热方式	红外加强制热风
Heating type	Infrared&hot air
冷却区数量	1
Cooling zone	
运输方向	左→右
Conveyor direction	left-right
传送方式	网传动 + 链传动
Conveyor type	Net+Chain transmission
运输带速度	0-1500mm/min
Conveyor speed	
温度控制方式	PID&SSR
Temperature control	
温度控制精度	±1℃
Temperature control accuracy	
PCB温度分布偏差	±2℃
Temperature distribution deviation	

特点

Characteristics

采用红外与热风混合加热技术，配备专用设计风轮风速稳定，温度均匀

独立PID控制，上下独立加热方式，温度均匀、准确、升温快

前置式控制操作面板，避免控制柜内温度过高，提高机器稳定性

智能曲线加热方式，配备8条工艺曲线完全满足各类焊接工艺要求

可编程控制技术，预存曲线记忆存储功能，自动完成整个焊接过程

采用精密热电偶测温，补偿电路设计，使测温更准确，曲线更完美

Infrared and hot air heating technology, equipped with special designed wind wheel.

PID controlling and Up-Down heating type.

Front-load operation panel avoids highly temperature in the panel to improve stability.

Intelligent temperature wave heating type, oversized capacity wave selection, have 8waves can satisfy various soldering technological requirements.

Use programmable technology, preset the temperature wave memory storage function, the whole welding process automatically.

Adopt the thermocouple temperature measurement and add the compensation circuit, make the temperature measurement more accurate, the wave more perfect.

系列产品

Serices of products

型号	T-961S	T-960S
Model		
加热区数量	上4下2	上3/下2
Heating zones	Upper4/Down2	Upper3/Down2
加热区长度	1000mm	960mm
Heating zone length		
PCB最大宽度	350mm	300mm
Max width of PCB		
升温时间	20分钟	15分钟左右
Heat-up time	20mins	15mins
温度控制范围	室温 ~ 350℃	室温 ~ 350℃
Range of temp control	RT ~ 350℃	RT ~ 350℃
电源	220V/380V	220V/380V
Power		
额定功率	11.8KW	8KW
Peak power		
平均功率	6.5KW	4.5KW
Work power		
外型尺寸（长*宽*高）	1500*694*567mm	1450×630×470mm
Overall dimensions(L*W*H)		
机器重量	110kgs	90KG
Weight		



通道式回流焊机

Channel Reflow Oven

T-960S



通道式回流焊机

Channel Reflow Oven

T-961S

SMT-
Channel Reflow Oven

线路板表面贴装-
通道式回流焊机

技术参数
Technical Parameter

加热方式 Heating type	红外加强制热风 Infrared&hot air
冷却区数量 Cooling zone	1
运输方向 Conveyor direction	左→右 left-right
传送方式 Conveyor type	网传动+链传动 Net+Chain transmission
运输带速度 Conveyor speed	0-1500mm/min
温度控制方式 Temperature control	PID&SSR
温度控制精度 Temperature control accuracy	±1℃
PCB温度分布偏差 Temperature distribution deviation	±2℃

系列产品
Series of products

型号 Model	T-961	T-960	T-960e	T-960W
加热区数量 Heating zones	上3下3 Upper3/Down3	上3/下2 Upper3/Down2	上3/下2 Upper3/Down2	上3/下2 Upper3/Down2
加热区长度 Heating zone length	730mm	960mm	960mm	960mm
PCB最大宽度 Max width of PCB	230mm	300mm	300mm	300mm
升温时间 Heat-up time	7分钟 7mins	15分钟左右 15mins	15分钟左右 15mins	15分钟左右 15mins
温度控制范围 Range of temp control	室温~300℃ RT~300℃	室温~300℃ RT~300℃	室温~350℃ RT~350℃	室温~350℃ RT~350℃
电源 Power	220V	380V	380V	380V
额定功率 Peak power	3.5KW	8KW	8KW	8KW
平均功率 Work power	1.9KW	4.5KW	4.5KW	4.5KW
外型尺寸 (长*宽*高) Overall dimensions(L*W*H)	1000*466*445mm	1450×630×470mm	1200×630×470mm	1450×630×470mm
机器重量 Weight	70kgs	96KG	88kg	96KG

特点
Characteristics

采用红外与热风混合加热技术，配备专用设计风轮风速稳定，温度均匀
独立PID控制，上下独立加热方式，温度均匀、准确、升温快
前置式控制操作面板，避免控制柜内温度过高，提高机器稳定性
智能曲线加热方式，配备8条工艺曲线完全满足各类焊接工艺要求
可编程控制技术，预存曲线记忆存储功能，自动完成整个焊接过程
采用精密热电偶测温，补偿电路设计，使测温更准确，曲线更完美

Infrared and hot air heating technology, equipped with special designed wind wheel.
PID controlling and Up-Down heating type.
Front-load operation panel avoids highly temperature in the panel to improve stability.
Intelligent temperature wave heating type, oversized capacity wave selection, have 8waves can satisfy various soldering technological requirements.
Use programmable technology, preset the temperature wave memory storage function, the whole welding process automatically.
Adopt the thermocouple temperature measurement and add the compensation circuit, make the temperature measurement more accurate, the wave more perfect.



通道式回流焊机
Channel Reflow Oven T-960



通道式回流焊机
Channel Reflow Oven T-960e



通道式回流焊机
Channel Reflow Oven T-960W



小型六温区回流焊机
Mini Channel Reflow Oven T-961

SMT-Desktop Lead-free Reflow Oven

线路板表面贴装-台式高温无铅回流焊机

技术参数

Technical Parameter

加热方式 Heating Type	红外与热风混合加热 Infrared&Hot air
是否可联机 On-line Operation	可联机 On-line
电源电压 Power	AC220~230V/50Hz
温度范围 Temp Range	常温~350℃ Room temp~350℃
工艺周期 Cycle Time	2~16 min
排烟管道 Off-gas Pipe	有 Exist
单机曲线存储数量 The Curve storage capacity of machine	8

系列产品

Series of products

型号 Model	T-937	T-937M
抽屉容纳面积 Drawer Area	306 mm×322mm	350x400mm
有效 焊接面积 Soldering area	无铅 lead-free 260mm×260mm 有铅 lead welding 300mm×310mm	290x375mm 315x375mm
额定功率 Rated Power	2300W	3300W
产品外形尺寸 Dimension	404×372×280mm	473×466×290mm
产品重量 Weight	18kg	22kg

特点

Characteristics

焊接无铅锡膏效果良好，适用范围广泛。
 配备PC端控制软件。
 控制软件独创图形化显示曲线模块，可实时动态显示曲线。
 控制软件具有曲线报表打印功能。
 控制软件内置299种锡膏数据，可为用户设置曲线提供全面参考。
 采用高速稳定的主控MCU，测温准、控温精。
 具有温度校正补偿功能，使机器在温度变化环境中保持稳定的测温品质。
 具有均温风机促进炉内热风循环，提高炉内均温程度。
 控温范围广，采用顶部加热方式，适合任何单/双面、有铅/无铅焊接。
 具有废气排放通道，保持良好的用户工作环境。
 具有强大的数据库管理功能。
 具有恒温定时功能。

Solder leadfree paste very well.
 Connect with PC.
 The software is with graphical display, display the wave intuitively.
 The software is with wave printing function.
 The software is with 299 kinds of paste data inside.
 Adopt stable and high-speed MCU, temperature in the oven is very stable, exactly and even.
 Add the compensation circuit, make the oven temperature keep stable from different environment.
 The oven is with hot air fan inside.
 The temperature is room temp to 350C, suit for single/double side PCB and lead/leadfree paste soldering.
 Add special exhaust on the back, provide good operation environment.
 Thermostatic timer function.



台式回流焊机
Desktop Reflow Oven T-937



台式回流焊机
Desktop Reflow Oven T-937M



SMT- Desktop Reflow Oven

线路板表面贴装- 台式回流焊机

技术参数

Technical Parameter

工艺周期 Cycle Time	1~8 min
加热方式 Heating Type	红外加热 Infrared Heating
曲线数量 Waves Quantity	8
电源电压 Power Supply	AC 110V (962A+无110V) /AC 220V
温度范围 Temp Range	0-280℃

特点

Characteristics

超大容积回焊区, 大大增加本机的使用范围, 节省投资。
内存八种温度参数曲线可供选择, 并设有手动加热、强制冷却等功能;
整个焊接过程自动完成, 操作简单。
独特的温升和均温设计:
刚毅的外观, 可视化的操作, 友好的人机操作界面, 完美的温度曲线方案, 从始至终体现科技为本; 轻巧的体积和重量, 让你节约大量金钱;
台面式放置模式, 可让你拥有更大的空间;
完善的功能选择: 回焊、烘干、保温、定型、快速冷却等功能集于一身;
可完成CHIP, SOP, PLCC, QFP, BGA等所有封装形式的单、双面PCB板焊接;
可用作产品的胶固化, 电路板热老化, PCB板维修等多种工作。
广泛适用于各类企业、公司、院所研发及小批量生产需要。

A large infrared soldering area, which increases the usage range of this machine drastically and makes it an economical investment.
Parameters of eight soldering cycles are predefined and the entire soldering process can completed automatically from Preheat, Soak and Reflow through to cool down.
Special heat up and temperature equalization with all designs
Ergonomic design, practical and easily operated
Good build quality but at the same time light weight and a small footprint allows the oven to be easily bench positioned transported or stored.
Large number of available functions
solder most boss-eyed or double-face PCB boards small parts, for example CHIP, SOP, PLCC, QFP, BGA etc. It is the ideal rework solution from single runs to on-demand small batch production.

系列产品

Series of products

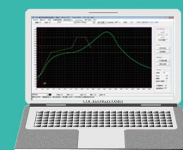
型号 Model	T-962	T-962A	T-962C	T-962A+
托盘面积 Drawer Size	180x235mm	300x320mm	400x600mm	370x450mm
额定功率 Rated Power	800W	1500W	2800W	2300W
温度控制范围 Range of temp control	0~280℃	0~280℃	0~280℃	0~350℃
功能 Function	恒温 烘干 Thermostat Drying	恒温 烘干 Thermostat Drying	恒温 烘干 Thermostat Drying	恒温 烘干 联机操作 Thermostat Drying On-line
包装尺寸 (长*宽*高) Packing Dimensions(L*W*H)	38*24*38cm	51*45*33cm	76*60*35cm	60*56*33cm
机器重量 Weight	8kg	15kg	28kg	18kg



台式回流焊机
Desktop Reflow Oven T-962



台式回流焊机
Desktop Reflow Oven T-962A



台式回流焊机
Desktop Reflow Oven T-962C



台式回流焊机
Desktop Reflow Oven T-962A+

SMT for Repairing- Infrared Rework Station

线路板表面贴装之维修设备- 红外拆焊台

特点

Characteristics

采用自主研发的红外线拆焊技术。

专用红外线加热，穿透力强，器件受热均匀。

突破传统热风拆焊机罩住元件加热，热冲击较大缺点。

操作容易，经过一天训练即可完全操作本机。

无需拆焊治具。

双温区拆焊系统，底部陶瓷预热溶胶系统配合顶部红外加热系统操作。

红外线加热，无热风流动，不会影响周边微小元件，可满足绝大部分需拆焊元件。

Adopt infrared welding technology which is developed independently.

Infrared heating, heating is easy to pierce and distribute evenly, which overcome disadvantage (burn out elements) of traditional welding machines.

Easy to operate. You just need one-day training and operate it skillfully.

No need for unsolder tools.

They have two heating zones, one is hot-melt system. Another is infrared heating system.

Infrared heating without heated air flowing. No impact on circumjacent small elements. It is suitable for all of the elements, especially Micro BGA elements.

系列产品

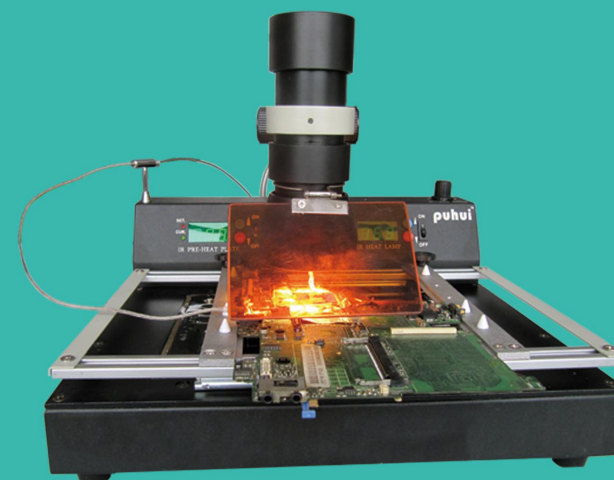
Series of products

型号 Model	T-862	T-862++	T-870A	T-835
加热方式 Heating Type	红外加热 Infrared Heating			
整机功率 Rated Power	600W	800W	1000W	300W
预热温度范围 Range of Preheating Temp	60-200°C	60-200°C	60-200°C	---
上加热温度范围 Range of IR Temp	100-350°C	100-350°C	200-450°C	0-350°C
电烙铁温度范围 Range of 936 Iron Temp	200-450°C	200-450°C	---	---
预热面积 Working bench size	120X80mm	120X120mm	240X180mm	---
可拆焊芯片尺寸 Repairing chips Size	15X15-25X25mm	15X15-35X35mm	35X35-50X50mm	15X15-35X35mm
包装尺寸 Packing Size	460X340X305mm	460X340X305mm	430X260X420mm	290X170X300mm
重量 Weight	8kg	10kg	11kg	4kg



红外拆焊台
IR Rework Station

T-862



红外拆焊台
IR Rework Station

T-870A



红外拆焊台
IR Rework Station

T-862++

SMT-
Infrared Rework Station

线路板表面贴装之维修设备-
红外返修站

特点

Characteristics

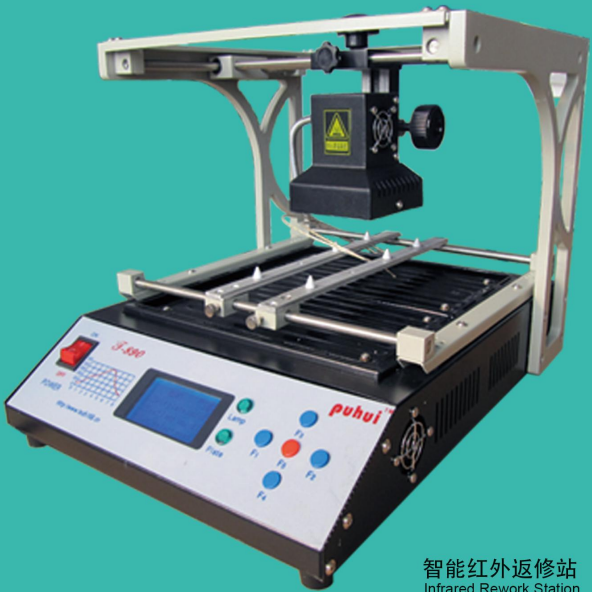
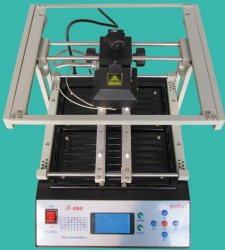
强大而完善的功能选择，内存八种温度曲线，用户可根据拆焊要求任意选取加热曲线；
智能曲线加热，可按你预设的温度曲线自动完成整个拆焊过程，使整个拆焊过程更加科学；
三维立体调节灯体，可伸缩式滑架系统，适用于任何角度元器件的拆焊，红外灯体配有激光定位，使调节更方便定位更精确；
PID智能控温技术，控温更精确，曲线更完美，能有效避免迅速升温或不间断升温而造成芯片或电路板损坏；
超大功率预热熔胶系统，并采用自主研发的红外线发热器件，穿透力强、器件受热均匀、控温更准确。
可拆焊或返修BGA、SMD、CSP、LGA、QFP、PLCC和BGA植球，各种排插条和针式插座（如CPU插座和GAP插排），完全能满足电脑、笔记本、电竞等BGA拆焊/返修要求，对电脑南北桥拆焊尤为合适；
友好的人机操作界面，完美的液晶显示，整个加热过程让你一目了然；
刚毅的外观，轻巧的体积，从始至终体现科技为本。台式放置模式，可让你拥有更大的空间；
简单的操作说明，让你一看就会。

This machine has the strong and perfect function selection, with eight temperature waves in the memory software, you can select the right temperature wave according to the solder/unsolder request. Intelligent temperature wave heating, can achieve the solder/unsolder automatically. Three-dimensional adjustable lamp body, use laser light, suitable for unsoldering any-angle components. PID intelligent temperature control can avoid the IC damage due to the fast or uninterrupted warming up. This machine has a super hot melt system, use infrared welding technology which is developed independently, heat is easy to pierce and distribute evenly, can suit for a variety of computer, notebook, play station's BGA components, especially suits to the computer north and south bridge. Friendly human-machine operation interface, perfect LCD display, you can watch the whole repairing process very clearly. Ergonomic design, practical and easily operated. Good build quality but at the same time light weight and a small footprint allows the T-890 to be easily bench positioned, transported or stored.

技术参数

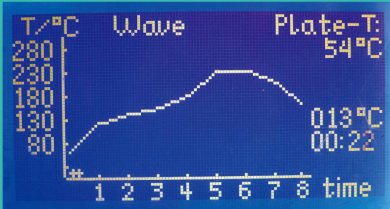
Technical Parameter

型号 Model	T-890
加热方式 Heating Type	红外加热 Infrared Heating
整机功率 Rated Power	1500W
预热温度范围 Range of Preheating Temp	0-350℃
上加热方式 Type of IR heating	八条温度曲线 8 waves for repairing
预热面积 Working bench Size	245X260mm
可拆焊芯片尺寸 Repairing chips Size	60X60mm
包装尺寸 Packing Size	390X220X620mm
重量 Weight	11kg



智能红外返修站
Infrared Rework Station

T-890



SMT-
Preheating Plate

线路板表面贴装-
预热平台

特点
Characteristics

机器选用自主研发的红外线高效发热器件，采用先进的PID智能控温加热技术，进行精确控温。专用红外线加热穿透力强、器件受热均匀、无热风流动不会让PCB板上的微小元件移位，保证焊接质量。

本机配备大功率预热（溶胶）系统，预热范围充足，可与手持式红外焊接机T-835配套使用。操作容易，经过简单训练即可完全操作本机。

Plate is with infrared component to give off heat which independent exploration, adopts advanced PID intelligent temperature, controls temperature precisely. Plate can heat up components on the PCB, which contains lead or not. Adopt infrared heat, easy to cut through, heat proportion, don't have sirocco flow. Don't shift the small components on the PCB board, ensure the welding quality. It has a higher power heating system, larger heating area. Using together with the handhold infrared welder T-835. Easy operate, you can operate it after simple training.

系列产品
Series of products

型号 Model	T-8280	T-8120	T-946
工作台面尺寸 Working Bench Size	410x316mm	200x240mm	267mm×320mm
额定功率 Rated Power	1600W	500W	800W
温度设置范围 Range of Temp	0-450℃	0-450℃	0-450℃
加热面积尺寸 Preheating Size	280mm×270mm	120mm×120mm	180x240mm
包装尺寸 Packing Size	41x21x52cm	31x27x16cm	30x21x25cm
重量 Weight	8kgs	4kgs	8kgs



预热平台
Preheating Plate

T-8120



加热平台
Electronic Hot Plate

T-946



SMT-
Stencil Printer

线路板表面贴装-
锡膏印刷台

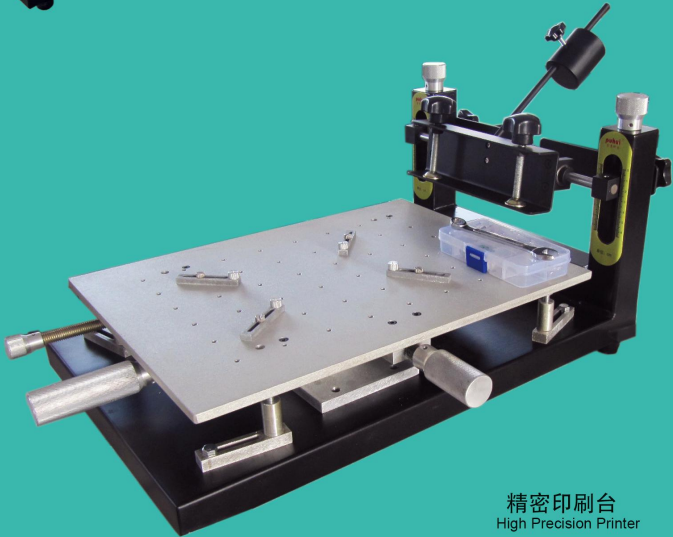
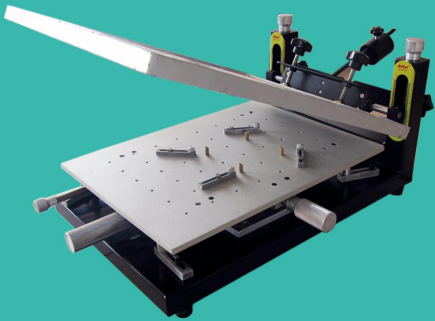
特点
Characteristics

机架采用加厚钣金制作，选材上等，结实牢固、经久耐用；
钢网支架采用螺旋丝杆上下，可调高度，方便控制PCB厚度；
精密印刷台属于电子贴装焊接设备的配套产品，用于PCB板焊接数量较小的情况，为PCB板的焊盘挂锡,便于下一步进行贴片元器件的贴装。
操作平台可以旋转30度，且重复精度高，校版方式采用钢网移动，并结合印刷平台的X、Y轴微调校正，方便快捷；
PCB板定位方便灵活轴微调校正相结合,校板的过程方便快捷；
丝网夹支架采用丝杆上下调节调整高度，控制PCB板的厚度。

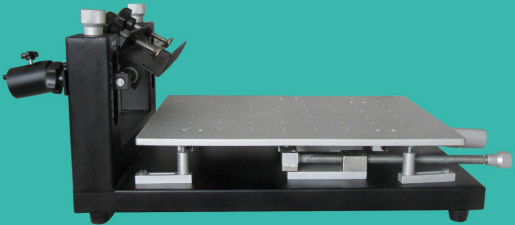
The same platform as printer can be selectable,easy to locate both single and double sides of PCB board,high flexibility ensure high printing precision;
The steel stencil can be rotated 30 degrees at most,and the precision can be kept all the way when repeat works,can be comparable with automatic machine;
Using the way of steel stencil movement to adjust the best position,combining with the fine adjustment of X-axis、Y-axis to correct,convenient and efficient;
The frame made of thickened sheetmetal,finest material,good quality with outstanding durability;
The brackets using the bolt bar to adjust the height,convenient for controlling the thickness of PCB.

技术参数
Technical Parameter

型号 Model	精密印刷台 Stencil printer
操作平台大小 Platform Size	300*400mm
PCB板大小 PCB Size	270*370mm
适用钢网尺寸 Stencil Size	370*470mm
精密印刷平台高度 Platform Height	180mm
PCB定位方式 PCB Positioning Mode	外形 基准孔 Outside/ Reference Hole
外形尺寸 (L*W*H) Packing Size	32*41*60cm
重量 Weight	14kg



精密印刷台
High Precision Printer



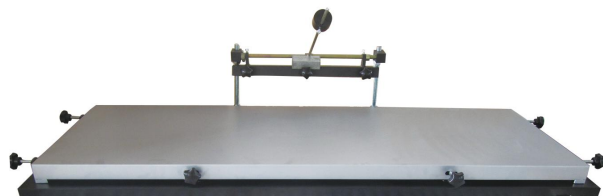
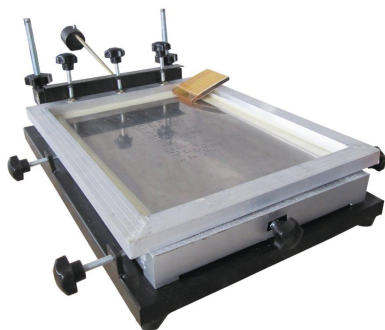
SMT- Stencil Printer

线路板表面贴装- 锡膏印刷台

系列产品

Series of products

型号 Model	Small printer 小号印台	Middle printer 中号印台	Large printer 大号印台	Larger printer 特大号印台	1.2m LED printer 1.2m LED 印台
工作台面尺寸 Working bench	300x240mm	440x320mm	600x420mm	700x500mm	1300x450mm
包装尺寸 Packing Size	14x59x45cm	70x12x51cm	91x64x13cm	91x70x16cm	166x70x14cm
重量 Weight	7kgs	11kgs	16kgs	22kgs	30kgs



锡膏印刷平台
Solder Paste Printer

SMT- Related Gadget

线路板表面贴装- 相关耗材配件



真空吸笔
Vacuum Suction Pen

五槽喂料架
Five slot feeder

防静电手套
Anti-electrostatic Glove



锡线
Solder Wire

锡膏
Solder Paste

助焊剂
Flux



搅拌刀
SMT Stirring Knife

刮刀
Scraper

橡胶刮板
Rubber Scraper



高温胶带
High Temperature Tape

铝箔胶带
Aluminum Tape

美纹胶带
Masking Tape